

DYNAMIC AIR TECHNOLOGY

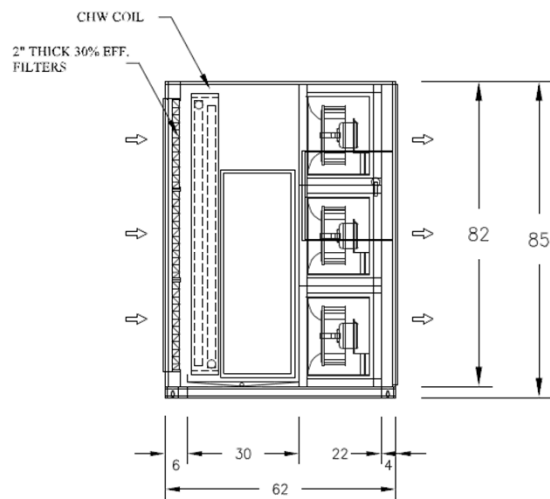
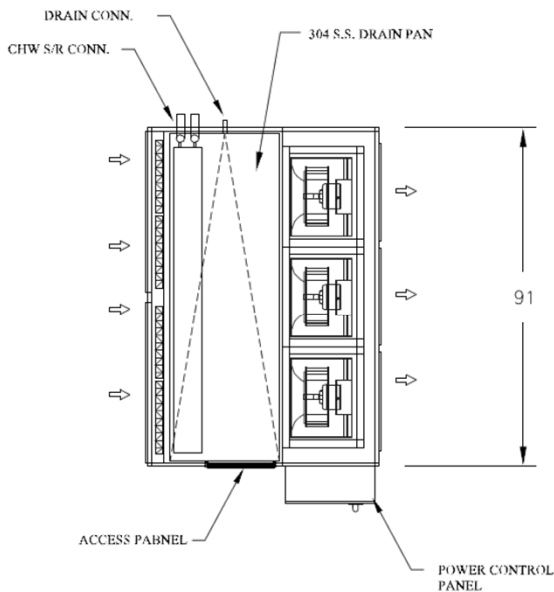
708 N Vincent Ave. Covina, CA 91722 • Phone: (626) 967 -7273 • Fax: (626) 967 -7273



Multi Fan Unit MFU

DATs Multi Fan Unit

The MFU replaces the idea of having one large fan that has an AC motor with several smaller fans that use EC motors. A typical MFU will have means of filtering, cooling, and/or heating the air stream.



A 3x3 Multi Fan Unit designed to cool at 12,600 CFM

NOTE

All of DAT's Multi Fan Units are constructed and factory run tested before being shipped out to ensure customer satisfaction.

Advantages of DAT's Multi Fan Unit

Energy Efficiency

The MFU is known to use 25% less energy .

Noise Reduction

Sound levels are significantly lower.

No VFD Required

EC motors do not require a VFD to run.

Direct Drive, No Belts

Not as many parts to provide maintenance for.

Vibration Levels

Very little or no vibration can be felt.

Light in Weight

The largest fan/motor combination weighs only 75 pounds.

Built in Redundancy

If one motor/fan goes out, others speed up to compensate for lost CFM.

Easy to Replace

In the case of a failure, replacing an EC fan/motor unit can be done in a matter of minutes.

DAT's ECM Specifications

DAT carries a variety of EC motors and fans. The following are general specifications of ECM capability.

Motor Size \longrightarrow 0.27kW (.37HP) to 4.1kW (5.5HP)

Wheel Size \longrightarrow 25 cm. (10 in.) to 63 cm. (25 in.)

Operating Voltages $\left\{ \begin{array}{l} 120 \text{ v. / 1ph. / 60Hz} \\ 208-230\text{v, 460v / 1ph. / 60 Hz} \\ 208-230\text{v, 460v / 3ph. / 60 Hz} \end{array} \right.$

ECM Cube Construction

DAT builds their own housing for each motor.

